

MONTHLY MEMBERSHIP PROGRESS REPORT

District 1 BK

Results as of: 3/31/2026

GMT:

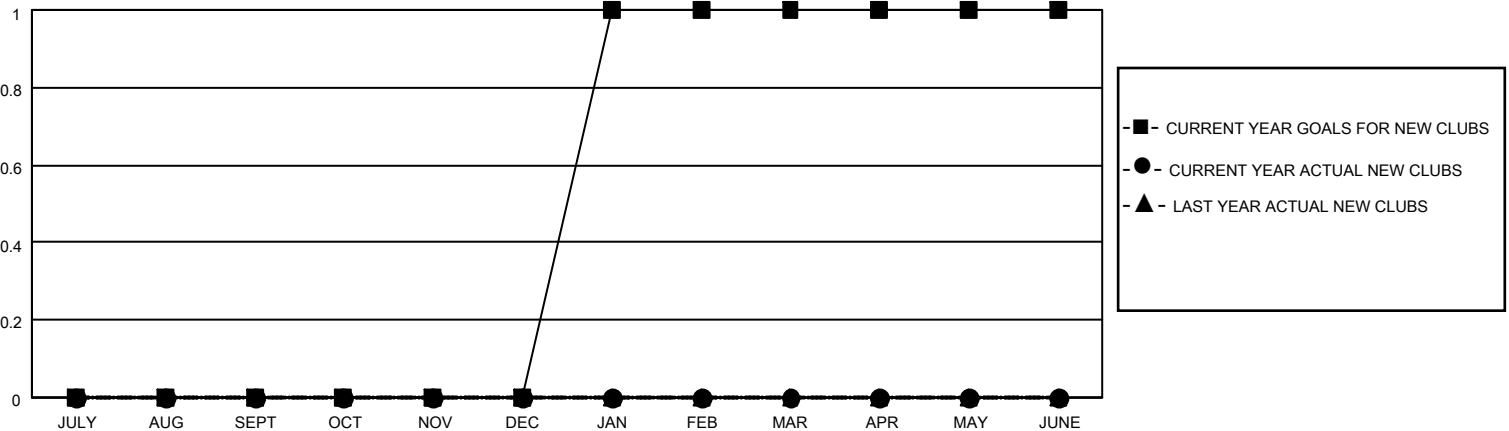
LOCATION ILLINOIS

GMT CA

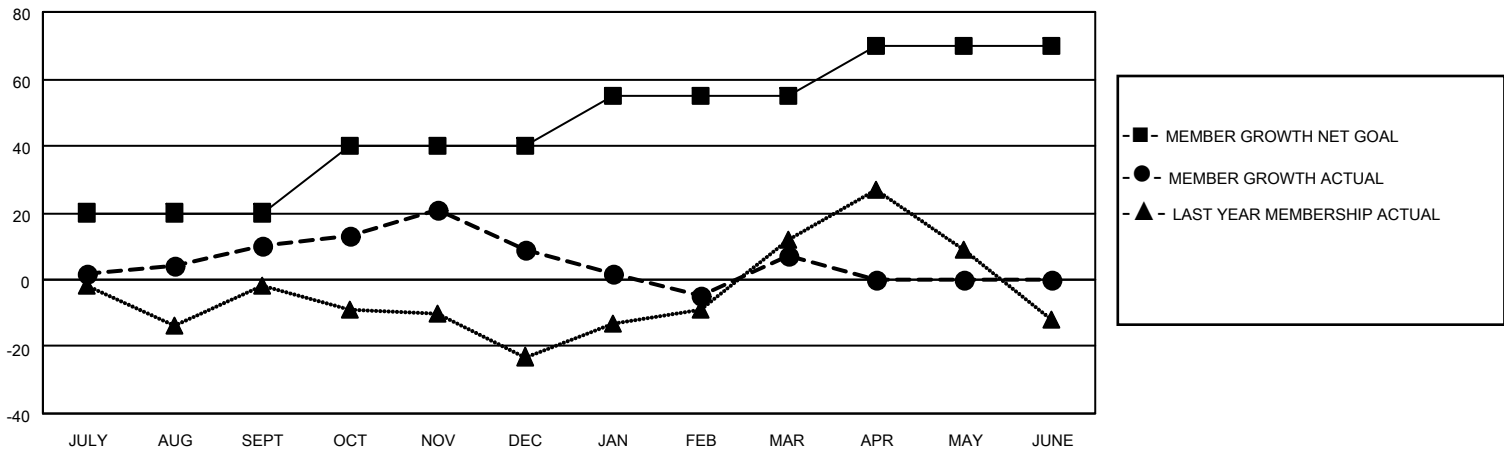
Clubs			
RESULTS FOR 2025-2026			
QUARTER	NEW CLUB GOAL	NEW CLUBS	DROPPED CLUBS
JULY/AUG/SEPT	0	0	0
OCT/NOV/DEC	0	0	1
JAN/FEB/MAR	1	0	0
APR/MAY/JUNE	0	0	0

Members			
RESULTS FOR 2025-2026			
QUARTER	MEMBER GROWTH NET GOAL	MEMBER GROWTH ACTUAL	DROPPED MEMBERS ACTUAL (including transfers)
JULY/AUG/SEPT	20	34	19
OCT/NOV/DEC	20	37	36
JAN/FEB/MAR	15	42	41
APR/MAY/JUNE	15	0	0

GOALS AND ACTUAL NEW CLUBS CUMULATIVE



GOALS AND ACTUAL MEMBERS CUMULATIVE



DROPPED CLUBS: 1	33 CLUBS OF 58 ADDED 1 OR MORE NEW MEMBERS	GENDER DISTRIBUTION MALE 1,260 (71.35%) FEMALE 504 (28.54%)
DROPPED MEMBERS DECEASED 21 CLUB CANCELLED 3 OTHER 72 TOTAL 96	CLICK HERE FOR CUMULATIVE MEMBERSHIP DATA	TOTAL FAMILY UNIT MEMBERS 280 FAMILY MEMBERS PAYING HALF DUES 140